



Town of Rangely

*RDA Packet March
21, 2019 7:00pm*



1 – Agenda



GUIDELINES FOR PUBLIC INPUT

Public Input is a vital and important portion of every meeting and will be permitted throughout the meeting, but according to the following guidelines:

- a. Public input is allowed during the Agenda identified **Public Input** and **Public Hearing** portion of the meeting.
 - i. If you would like to address the meeting during the appropriate times, please raise your hand and when called upon you will be asked to come to the podium. ***Announce your name*** so that your statements can be adequately captured in the meeting minutes.
 - ii. ***Please keep your comments to 3-5 minutes*** as others may want to participate throughout the meeting and to insure that the subject does not drift.
- b. Throughout the meeting agenda calls for public input will be made, generally pertaining to specific action items. Please follow the same format as above.
- c. At the conclusion of the meeting, if the meeting chair believes additional public comment is necessary, the floor will be open.

We hope that this guideline will improve the effectiveness and order of the Town's Public Meetings. It is the intent of your publicly elected officials to stay open to your feelings on a variety of issues.

Thank you, Rangely Mayor

Agenda
RANGELY DEVELOPMENT AGENCY (RDA)
Town of Rangely Conference Room
*** March 21, 2019 @ 7:00p.m. ***

Brad Casto, Chairman

Jason Krueger – Vice Chair
Karen Reed
Andrew Key

Keely Winger
Konnie Billgren
Vacant Position

Ex-Officio

Rio Blanco County Commissioner – Jeff Rector
School District Representative – Joyce Key
RJCD Board Representative – Ron Granger
Rangely Special Districts – John Payne
Member – Sandy Payne
Member – Vince Wilczek

- 1) Call to Order
- 2) Roll Call
- 3) Minutes of Meeting
 - a) *Discussion and Action to approve the minutes of January 17, 2019*
- 4) Changes to the Agenda
- 5) Public Input
- 6) Old Business
 - a) *Urban Renewal Plan Update Funding Update*
 - b) *Airport Vehicle*
 - c) *Grant Review*
- 7) New Business
 - a) *Discussion and Action to approve the February 2019 Financials*
 - b) *Presentation DARG Update – (Dan Fiscus)*
 - c) *Discussion and Action to support the application of a REDI Grant from the Town of Rangely to create an Economic Development Plan for Rangely, Colorado*
- 8) Information
- 9) Adjourn

3 – Minutes

Minutes of the
RANGELY DEVELOPMENT AGENCY (RDA)
*** January 17, 2019 @ 7:00p.m. ***

Meeting was called to order at 7:00 p.m. by Chairman, Brad Casto

Roll Call:

Members Present: Brad Casto, Jason Krueger, Keely Winger, Konnie Billgren, Andrew Key, Lisa Piering, Joyce Key, Ron Granger, and John Payne

Members Absent: Jeff Rector, Karen Reed, Sandy Payne, Vince Wilczek

Minutes of the December 6, 2018 meeting were moved for approval by Konnie and seconded by Keely. Motion passed.

There were no changes to the agenda
There was no Public Input

Old Business

The Urban Renewal Plan Update:

Lisa will visit with Kim to get information about possible grants for revising our current plan. Keep this topic for next month's agenda.

Airport Vehicle: The county vehicle being donated was totaled in an accident, however, Jeff sent word that another vehicle may be coming available. There were concerns that this vehicle may not be up for a donation only for bid. Brad will attend the February 19th county commissioners meeting and put forth a formal request for this vehicle. Meanwhile, Lisa is going to see if the town has an old Charger available for donation. Keep this topic for next month's agenda.

CNCC Program Update by Ron:

The goal for the start of a welding program is this summer after a survey is completed in CNCC's service area. Enrollment is up for this semester so far with CNCC being the only community college in the system showing this increase. The college also down one vehicle due to an accident. A Sea Plane was donated to the aviation program for training and possible certification for students. Two visitors from CCCS visited this week and very impressed with CNCC and Rangely.

New Business

Financials: Jason moved to approve the November 2018 Financials, and it was seconded by Andy. Motion passed.

DARG: Dan Fiscus presentation DARG Update: Richard Ott was not present. The museum has not received the 5 year plan that Ott was contracted to complete by June of 2018. The museum board will be sending a formal letter of request for its completion to the President of DARG. Dan requested that the RDA be ready to also send a letter if the plan was not delivered to the museum board by the end of this week. Dan will send Brad all of the necessary information if the letter is necessary. Keep this topic for next month's agenda.

Grants Review (Current RDA Program) A general consensus was that our grant program needs streamlined. Lisa will visit with Meeker's Town Manager, Lisa, on how their current program is working. Keep this topic for next month's agenda.

New Grant Opportunity: None Presented

General Information: Andy inquired about the UAV program at CNCC and Ron reported that a course was offered last semester and they are looking at moving forward with this program.

Meeting was adjourned at 7:44 p.m.

5 – Old Business
6 - New Business

TOWN OF RANGELY
REVENUES WITH COMPARISON TO BUDGET
FOR THE 2 MONTHS ENDING FEBRUARY 28, 2019

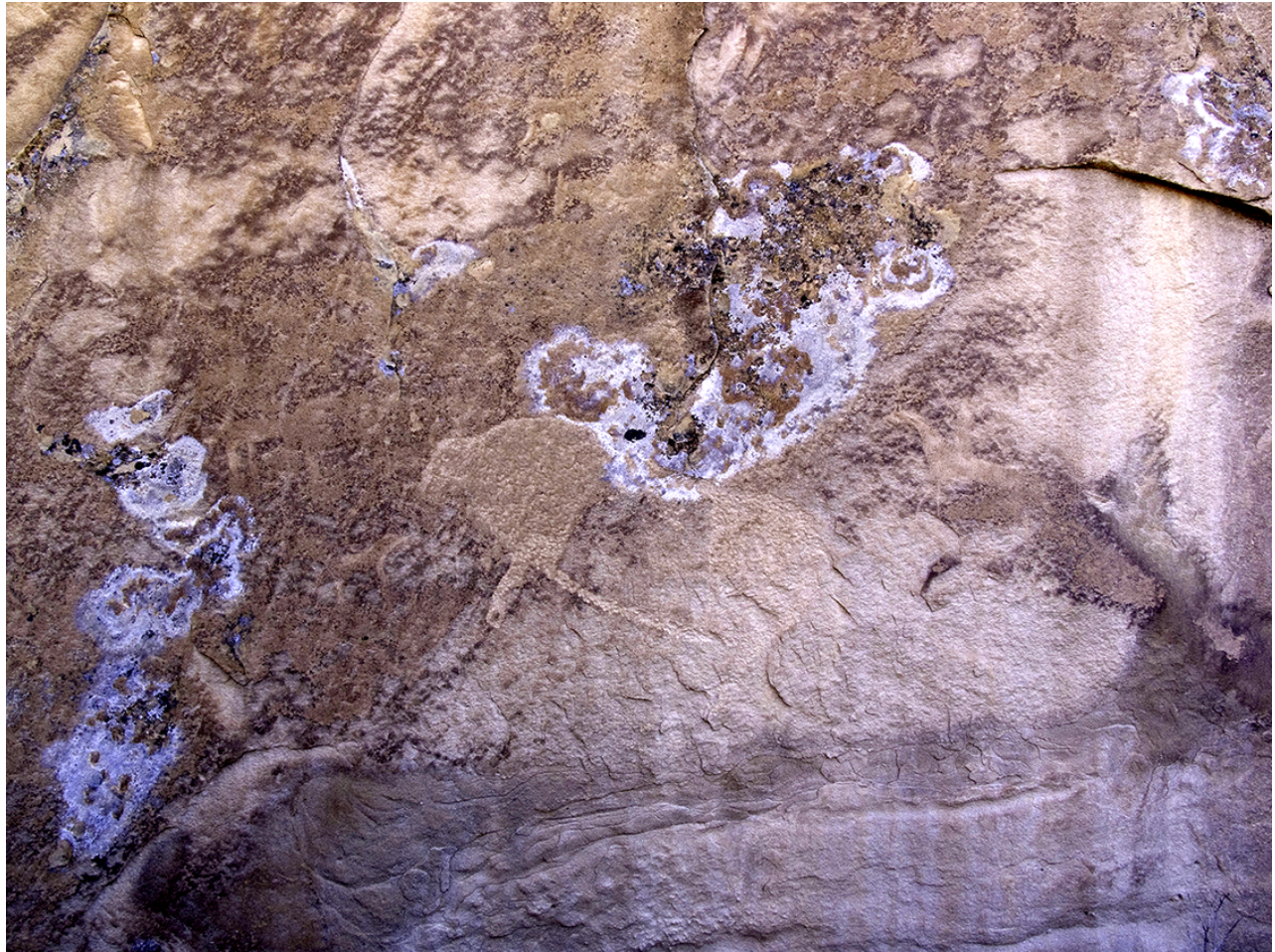
ECONOMIC DEVELOPMENT FUND/RDA

		<u>PERIOD ACTUAL</u>	<u>YTD ACTUAL</u>	<u>BUDGET</u>	<u>UNEARNED</u>	<u>PCNT</u>
	<u>REVENUES</u>					
73-30-100	HOUSING REVENUE	5,175.00	10,350.00	62,500	52,150.00	16.56
73-30-200	INTEREST EARNINGS CD	.00	.00	200	200.00	.00
73-30-500	MISCELLANEOUS INCOME	.05	.09	25,000	24,999.91	.00
		<u>5,175.05</u>	<u>10,350.09</u>	<u>87,700</u>	<u>77,349.91</u>	<u>11.80</u>
	TOTAL REVENUES					
		<u>5,175.05</u>	<u>10,350.09</u>	<u>87,700</u>	<u>77,349.91</u>	<u>11.80</u>
	TOTAL FUND REVENUE					
		<u>5,175.05</u>	<u>10,350.09</u>	<u>87,700</u>	<u>77,349.91</u>	<u>11.80</u>

TOWN OF RANGELY
EXPENDITURES WITH COMPARISON TO BUDGET
FOR THE 2 MONTHS ENDING FEBRUARY 28, 2019

ECONOMIC DEVELOPMENT FUND/RDA

	PERIOD ACTUAL	YTD ACTUAL	BUDGET	UNEXPENDED	PCNT
<u>EXPENDITURES</u>					
73-40-220 PROF/TECH SERVICES	6.12	921.85	5,000	4,078.15	18.44
73-40-250 HOUSING MANAGEMENT EXPENSE	4,654.50	8,568.50	40,400	31,831.50	21.21
73-40-260 HOUSING MAINT/REPAIRS	.00	5.49	1,000	994.51	.55
73-40-270 UTILITIES	20.64	41.28	100	58.72	41.28
73-40-300 MARKETING	.00	.00	31,000	31,000.00	.00
TOTAL OPERATING EXPENSES	4,681.26	9,537.12	77,500	67,962.88	12.31
TOTAL EXPENDITURES	4,681.26	9,537.12	77,500	67,962.88	12.31
TOTAL FUND EXPENDITURES	4,681.26	9,537.12	77,500	67,962.88	12.31
NET REVENUE OVER EXPENDITURES	493.79	812.97	10,200	9,387.03	7.97



A Plan for Research, Interpretation and Preservation of Archaeological Resources Near Rangely Colorado

Prepared For

Rangely Outdoor Museum

By

Richard W. Ott

Project Coordinator, Dominquez Archaeological Research Group (DARG)

and

Daniel Fiscus

Project Coordinator, Rangely Outdoor Museum (ROM)

Funded by

Rangely Development Corporation (RDC)

With additional funding by DARG

February 2018



A scenic view on the Dragon Trail and Douglas Creek Loop, looking east toward Cathedral Bluffs.

CONTENTS

Project Summary.....	1
Project Background.....	1
Archaeological Context	2
Strategic Planning Overview	3
Current Projects	4
Canyon Pintado Rock Art Preservation Project: Phase 1	4
Canyon Pintado Historic 1776 Inscription: Phase 1.....	6
Rock Art Assessment Series: Phase 1.....	7
1887 Ute Battle Site: Phase 1	8
Future Directions and Potential Long-range Goals and Objectives.....	9

Cover Image: A lichen covered petroglyph panel in Canyon Pintado depicting a bison with two horses and riders in front and behind.

PROJECT SUMMARY

This document is a year one report of results from an on-going collaborative partnership between Rangely Outdoor Museum (ROM) in Rangely, Colorado, and Dominquez Archaeological Research Group (DARG) based in Grand Junction, Colorado. Both organizations are 501(c)(3) non-profit corporations. The project was funded largely by a grant from Rangely Development Corporation (RDC), with supporting funding from DARG.

Broad goals of the project are to conceive and initiate research, preservation, and interpretative programs for the archaeological resources in Canyon Pintado National Historic District and other heritage landscapes in western Rio Blanco County; and to enhance awareness and appreciation of cultural heritage tourism values in the Rangely area. The project to date serves as a scoping assessment of archaeological landscapes and resources in local and adjoining regions for various public archaeology projects desired by the Rangely Community.

The scale and complexity of the archaeological resources in Rio Blanco County represent significant potential for developing on-going research and heritage tourism programs; while at the same time presenting serious challenges for local human, organizational, and funding resources. This report proposes a practical strategy and outlines a 5-year action plan that leverages existing combined assets of the project partners to address those challenges, and identifies a path for future growth and collaborative development of programs for research, preservation, and interpretation of archaeological resources in the Rangely area.

PROJECT BACKGROUND

Preliminary work on this project was initiated in summer 2017 at the request of Gaila Bell, Rangely Outdoor Museum (ROM) Board Member, who approached Richard Ott, Project Coordinator for Dominquez Archaeological Research Group (DARG), in regard to possible collaboration between their organizations for study and preservation of cultural resources in the Rangely area. In October 2017, following several months of exploratory discussions in Rangely, Grand Junction and Meeker, DARG and ROM executed a professional services contract for assessment and planning recommendations for Canyon Pintado National Historic District and Dragon Trail rock art sites, and other archaeological resources in the Rangely area. Dan Fiscus, ROM Board Member, was designated as project coordinator for the museum.

The original scope of work for the project included evaluation of paleontological as well as archaeological resources in the Rangely area. Initial efforts explored potential collaborative working relationships with paleontology stakeholders active in Rangely and the greater northwestern Colorado region. A DARG paleontologist was invited to discuss potential collaborative projects with Rangely stakeholders, however it became clear that competition among various local and professional paleontology interests made such collaboration impractical in the near-term. Consequently, the scope of the project was narrowed to focus on prehistoric and indigenous historical archaeology, and preliminary scoping of early European-American historical archaeology.

Initial research activities included a literature review and archaeological files search for western Rio Blanco County; and initial contacts with potential collaborative partners and historic preservation stakeholders throughout Rio Blanco County and neighboring regions. Scoping data from this effort are being made available to ROM as project deliverables.

ARCHAEOLOGICAL CONTEXT

Archaeological resources in the Rangely area demonstrate significant potential for major research, preservation, and interpretative programs and projects. With sustained collaborative support, such efforts could help to establish Rangely as a unique cultural heritage tourism destination, offering access to diverse public archaeology sites and unusual archaeological and historical cultural landscapes.

At present, records curated by the Colorado Office of Archaeology and Historic Preservation (OAHP) list 5268 prehistoric archaeology sites in Rio Blanco County, along with 1600 historic archaeology sites. Nearly 100 rock art sites are located within Canyon Pintado National Historic District, with dozens more located in East Douglas Creek, Dragon Trail and other areas surrounding Rangely. A significant majority of all the recorded cultural resources in Rio Blanco County are located on Federal public lands, which comprise more than 73% of the total land area in the County (Western Rural Development Center 2006). These archaeological resources, and the heritage landscapes where they are found, represent the cultural and spiritual heritage of Native Americans whose ancestors lived and traveled in the region from prehistory until the present day. And today these resources are increasingly recognized by area residents for the the cultural and economic values they hold.

In Canyon Pintado the vast majority of the protected rock art and known habitation sites occur along the cliff bands and in side canyons associated with the main Douglas Creek drainage. While the rock art sites that highlight the canyon walls are the primary focus of the National Register District, it also contains nearly 200 other recorded sites including resource gathering locales, open occupations, rockshelters, cap rock drilled-hole sites, and a wide range of masonry structures including granaries and storage cists, multiple room pueblos and walled defensive structures. Generally dating to the Formative period and the Fremont culture (ca. AD 300-1400), few of these cultural sites, including the rock art and masonry structures, have been intensively studied or recorded in systematic detail.

Unfortunately, cultural resources throughout the area face continual and significant risks from a range of human activities and environmental factors. Energy development and outdoor recreation on public lands, which have been the dominant source of the economy in the area for over 70 years, continues to threaten and negatively impact fragile archaeological, paleontological and historical sites. Collected artifacts continue to be removed from public lands by scientific, amateur, and malicious collector. Unintentional damage from land disturbance and outright vandalism also remains a persistent danger for many sites, especially those located within easy reach of human activity. Still, public interest in historic and prehistoric cultural resources continues to grow, matched locally by new commitments from Rangely Outdoor Museum and other diverse organizations in support of community stewardship and public archaeology programs.

Local and regional interest in developing sustainable programs supporting outdoor recreation and heritage tourism is also clearly growing throughout northwestern Colorado. In recent years Rio Blanco

County citizens started the Wagon Wheel OHV Trail System in collaboration with US Forest Service and Bureau of Land Management travel planning. The network of roads and trails system is now complete. In 2018 over 360 miles of trails in western Rio Blanco County were added to over 250 miles of trails already open in the eastern areas of the county. Altogether, the system offers extensive access to unique archaeological, scenic, and cultural landscapes.

In this fertile context, Rangely's diverse and under-studied archaeological resources represent a significant opportunity for boosting economic activity in the area through heritage tourism, public archaeology programs and events, and on-going collaborative archaeological research programs.

STRATEGIC PLANNING OVERVIEW

Thousands of tourists and other travelers pass through Canyon Pintado each year, on their way to other more well known tourist destinations in the region and beyond. The primary strategy of the 5-Year Plan outlined in this report is to improve our collective understanding of the cultural history of Canyon Pintado and the Douglas Creek Arch in order to tell a more compelling and comprehensive story of the archaeology and cultural legacy of the area, one which will help to grow recognition of Rangely as a unique heritage tourism destination .

A significant majority of existing archaeological records for rock art sites in Canyon Pintado and surrounding areas are extremely poor quality, lacking sufficient data, especially visual data, for analysis and assessment of the cultural significance of the resource. Many sites were recorded 30-plus years ago, typically with only crude field sketches or snapshot quality photographs of rock art panels. Even recently updated management site recordings often lack systematic, high-resolution, preservation quality image data and scaled panel diagrams. This data quality gap severely constrains research, resource monitoring, and preservation planning for the primary cultural resources for which the historic district was designated.

Given the existing conditions for rock art sites in the study area, it appears that an investment in high-quality documentation and analysis of publicly known and visited rock sites in the Rangely area is likely to yield the greatest near-term returned value. By providing comprehensive data supporting on-going preservation, research, and education programs, while identifying at-risk, high-value archaeological resources, the project will deliver data products enabling development of virtual and self-guided tours of public rock art sites in Canyon Pintado, along Dragon Trail, and other nearby locales. Site recording and stewardship activities associated with the project will attract participation by regional chapters of the Colorado Archaeology Society, and as more of the story of Canyon Pintado is revealed in on-going studies, visitation by state, national and international rock art enthusiasts and organizations is likely to significantly increase. Additionally, the Rangely Outdoor Museum's recently announced investigation of the historic 1776 inscription in Canyon Pintado, and its association with the Dominguez-Escalante Expedition, is certain to attract significant regional and national attention from historic trails organizations and enthusiasts.

Consequently, the primary strategic goals of the Rangely Outdoor Museum and DARG's collaborative 5-Year Plan are to:

- significantly improve baseline data for existing public rock art sites in ROM's area of interest, and establish recommended methods and technical standards for maximizing research, interpretive, and preservation values in on-going projects and programs;
- share data widely with professional, land management, tribal, and public stakeholders in order to build collaborative and sustainable research and funding partnerships; and
- develop forward looking plans for funding and implementing on-going research, preservation, and interpretive programs directed toward achieving the project's long-range goals.

CURRENT PROJECTS

Canyon Pintado Rock Art Preservation Project: Phase 1

Scope: *Comprehensive inventory, evaluation, planning and intensive baseline documentation of twenty or more high-priority, high-risk rock art resources within Canyon Pintado National Historic District; priority on publicly known, interpreted, and visited sites.*

This project was submitted to the State Historical Fund in October 2018 requesting grant funding for the initial phase of a major preservation, research and public archaeology initiative for rock art resources in Canyon Pintado National Historic District (5RB.984). The application was not successful because of reviewers' concerns about clear commitments for cash match funding and associated budget uncertainties. The application will be revised and resubmitted in the October 1, 2019 grant round.

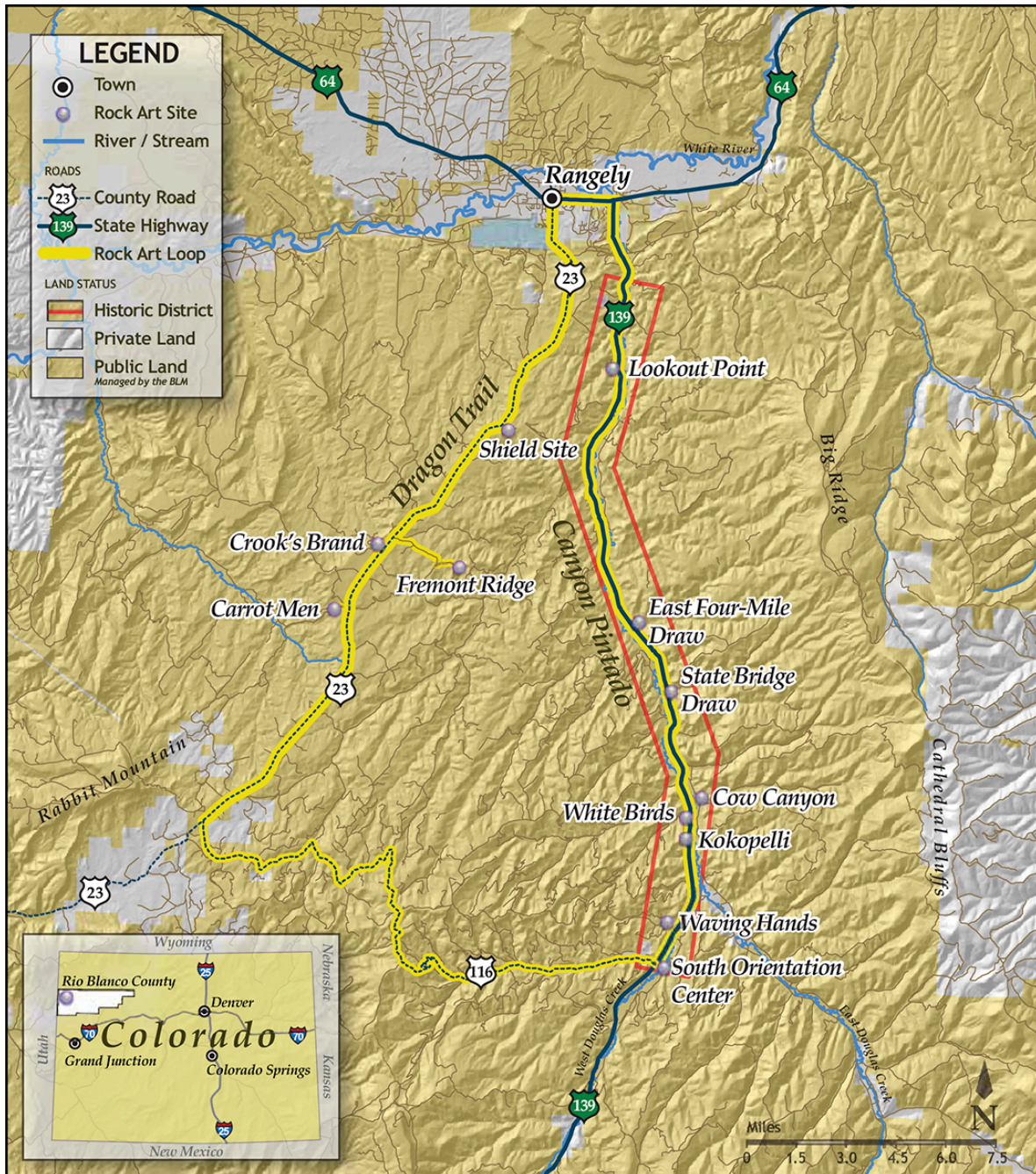
This major initiative will organize a team of DARG archaeologists and technical specialists who will compile and evaluate existing archaeological and historical records from more than 100 rock art sites located within the Canyon Pintado National Historic District. The project team will select at least twenty high-value and critically threatened rock art sites, including all public sites, to revisit and comprehensively document using advanced, high-resolution digital photography, low altitude UAV imaging, and a range of digital image processing techniques. Project data will be organized for analysis, review and curation by research partners. Data products will be shared with resource management agencies, professional, tribal and public archaeology partners. The project will leverage long-term collaborative relationships, and encourage newly formed partnerships and coalitions promoting public archaeology, site stewardship, historic preservation and heritage tourism in an under-served area of the state.

Project Highlights:

- SHF Competitive Grant
- Grant applicant DARG
- \$120,000 total project
- \$30,000 cash match required (ROM and others)
- Application submission by October 1, 2019
- Award by February 2020
- Contract executed by April 2019
- Contract ends October 2022

Future Phases:

Subsequent phases of planning and funding will be developed concurrently for this long-range project as Phase 1 activities proceed, with the broad objective of establishing comprehensive, high quality baseline data for all of the rock art resources within Canyon Pintado National Historic District.



Public archaeological sites in Canyon Pintado National Historic District, along Dragon Trail, East Douglas Creek and other nearby areas, offer significant potential for expanding Rangely Outdoor Museum's exhibit program to include online and self-guided driving and OHV tours in collaboration with BLM, Wagon Wheel West OHV Trail Network, and Colorado Heritage Tourism programs.

Canyon Pintado Historic 1776 Inscription: Phase 1

Scope: *Intensive recording and chronometric analysis of an early historic rock art inscription thought to be associated with the Dominguez-Escalante Expedition through Canyon Pintado in 1776.*

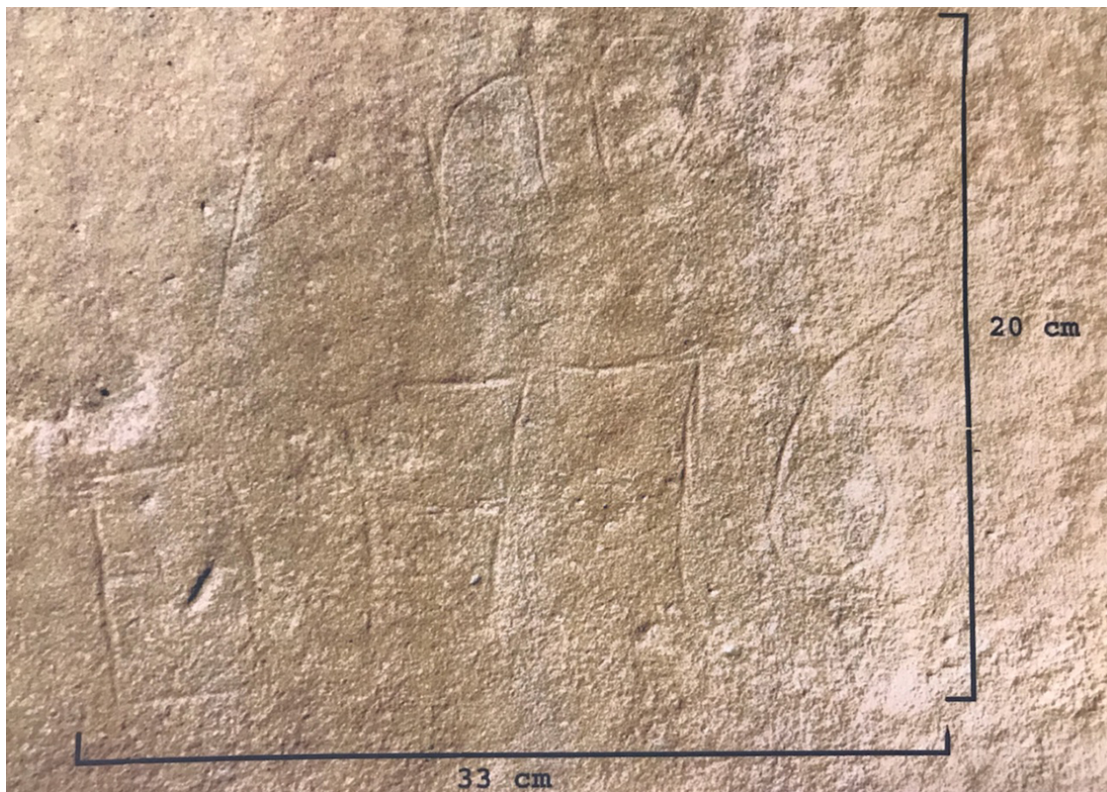
This project will intensively document and evaluate an inscription possibly made by the first Europeans explorers to travel through the Rangely area in 1776. The study will include advanced microsample testing developed by Arizona State University, which was used to authenticate a similar 1776 inscription discovered in Arizona in recent years. If the Canyon Pintado inscription proves to be authentic, it will be only the second such memorial left by the party of Spanish explorers ever discovered.

Project Highlights:

- SHF Archaeological Assessment Grant
- Grant applicant ROM
- \$15,000 total project
- No cash match required
- Application submission March, 2019
- Award by June 2019
- Contract executed by August 2019
- Contract ends August 2021

Future Phases:

Subsequent phases of work on this research theme will be developed as part of the assessment of the resource.



Historic inscription in Canyon Pintado National Historic District, thought to be left by Dominguez-Escalante Expedition in 1776.

Rock Art Assessment Series: Phase 1

Scope: *Intensive recording and analysis for a series of selected rock art sites located near Canyon Pintado and other areas in the vicinity of Rangely, focused on publicly known, interpreted, and visited sites.*

Planned as a concurrent complement to the large-scale Canyon Pintado Historic District research, this series of small-scale rock art assessment projects will be developed in 2019 and going forward for SHF Archaeological Assessment Grant Applications, concentrating on public sites located along Dragon Trail, numerous protected sites along East Douglas Creek. These sites are contributing resources to the Canyon Pintado National Historic District. They represent potential public archaeology opportunities with significant research value for deepening our understanding of Archaic (Barrier Canyon Style) and Formative (Fremont Style) rock art, as well as improved recognition of Ute, Comanche, and Shoshone origins of Protohistoric rock art in the area.

Project Highlights:

- SHF Archaeological Assessment Grant (first in a series)
- Grant applicant DARG
- \$15,000 total project
- No cash match required
- Application submission March, 2019
- Award by June 2019
- Contract executed by August 2019
- Contract ends August 2021



Carrot Men Site, a public archaeology site located along Dragon Trail south of Rangely.

1887 Ute Battle Site: Phase 1

Scope: *Survey and assessment of locales west of Rangely thought to be the scene of 1887 hostilities between Utes from reservation lands in eastern Utah, who were defending themselves from attack by state militia and federal troops attempting to deny them access to their traditional hunting territories in Colorado.*

Background research for an archaeological assessment of the 1887 Ute Battle Site west of Rangely was compiled during 2018 with plans now in development to apply for a SHF Archaeological Assessment grant following completion of the Canyon Pintado 1776 Historic Inscription Assessment. DARG has invited Douglas Scott, Ph.D., a leading expert in military archaeology, to consult on the project. Doug was an early and influential researcher in the use of metal detection and computer data analysis for battle sites. He is most well-known for his break-through work at the Battle of the Little Big Horn Site, and he continues to work on projects across the country and throughout the world on military archaeology projects.

Project Highlights:

- SHF Assessment Grant
- \$15,000 (no cash match required)
- Grant applicant ROM
- Application submission by Fall/Winter 2019
- Award by Winter/Spring 2020
- Contract executed by Spring 2020
- Contract ends Spring 2022

Future Phases:

Subsequent phases of work on this research theme will be developed as part of the assessment of the resource.



Colorado State Militia and Federal Troops camped near Meeker, en route to confront a Ute hunting party near Rangely in 1887.

FUTURE DIRECTIONS AND POTENTIAL LONG-RANGE GOALS AND OBJECTIVES

The projects undertaken with the current 5-year Plan will produce results that will help support the following long-range goals and objectives.

- Develop online digital exhibits and virtual tours.
- Expand and improve Canyon Pintado on-site interpretive exhibits.
- Expand Canyon Pintado stewardship program through local community and Colorado Archaeological Society Chapters throughout the state.
- Host American Rock Art Association Annual Conference, Colorado Council of Professional Archaeologists Annual Meeting, Colorado Rock Art Association (CAS Chapter) Annual Conference, and other public archaeology tours and events.
- Explore program development in collaboration with CNCC, CMU, and other academic partners.
- Develop on-going strategies for sustainable local and regional programs directed toward cultural resources research, preservation, and education in collaboration with Rio Blanco County Historical Society, Northwest Colorado Cultural Heritage Program, Nine Mile Canyon Association, Dinosaur National Monument, Bureau of Land Management, Ute Tribes, Regional CAS Chapters.
- Develop a strategy for reconstructing a wickiup village in a natural setting associated with the Wagon Wheel West trail system.
- Develop a strategy for establishing a state approved repository for curating archaeological and paleontological artifacts found on state lands in the Rangely region.
- Research aboriginal and historic trail routes through White River country, including the Dominguez-Escalante Historic Trail, aboriginal Ute Trails, historic period explorers' trails (Fremont, Berthoud, Powell, Hayden, and others).
- Comprehensive inventory and assessment of Fremont and Archaic Structures and rockshelters in Canyon Pintado, East Douglas, Mellen Hill, southern and western Douglas Creek Arch, and other lower White River locales.
- Documentation and curation of legacy private artifact collections from western Rio Blanco County.
- Natural setting re-construction of wickiups and other wooden features as tie-in with OHV and Historic Trail Networks.



Center for Regional Development
Advancing Collaboration : Energizing Regions



University of Kentucky
College of Agriculture,
Food and Environment
Community and Economic
Development Initiative of Kentucky

Rural Economic Development Innovation Rural Community/Regional Application

Application Acceptance Period: February 11, 2019-April 5, 2019. DUE BY APRIL 5, 2019

Letter of Interest Submission Deadline: March 8, 2019. (Please note: A Letter of Interest is not a requirement to submit a complete application)

About REDI

The USDA Rural Development Rural Economic Development Innovation (REDI) Initiative was designed to support regionalized planning to overcome multi-jurisdictional challenges and to better leverage federal, state, local and/or private funding.

In collaboration with the REDI Cooperators, the National Association of Counties, Rural Community Assistance Partnership, McClure Engineering Company, and Purdue University Center for Regional Development and University of Kentucky's Community Economic Development Initiative of Kentucky, the REDI Initiative will support rural communities by providing the opportunity to maximize their access to planning resources. These resources will enable the Cooperators to identify critical needs, create an actionable economic development plan, convene with potential partners, as well as implement project priorities that will ultimately improve economic stability and the quality of life in rural communities.

Purpose

This application is for REDI technical assistance and capacity building, to be provided free of charge, through the REDI Cooperators. Applications will be scored, reviewed and selected on a competitive basis.

Participation in REDI will enable a rural community or region to create an economic development plan that will include:

1) Evidence-based assessment of community assets, challenges and opportunities; 2) Goals that are focused, logical, targeted, and timely with tasks identified and the entities responsible for carrying these actions clearly delineated; 3) Clear planning strategies that are intended to help produce, either directly or indirectly, improvements in the local and regional economy; and 4) Metrics to track implementation and ongoing progress of the economic plan.

Benefits

Community and regional engagement with the REDI Cooperators will support technical assistance outcomes that build capacity within targeted areas of planning. This technical assistance will result in a strong regional economic development plan that identifies projects that may be eligible for other Rural Development programs and/or be a blueprint for leveraging other federal, state, local, or private sector resources.

Through a cooperative agreement with USDA Rural Development, REDI Cooperators will support a community and/or region with tools and technical assistance for economic development planning to create regional economic strategies.

Additional information about each of the Cooperators is provided on the next pages.



National Association of Counties (NACo)

Through its previous success in developing and administering high-quality educational, training, and technical assistance programs for rural county leaders, the National Association of Counties Research Foundation (NACoRF) has provided tools and resources for many rural communities to take on their own economic and community development projects. NACoRF is partnering with the National Association of Regional Councils (NARC) to develop a peer-learning program to teach local and regional leaders in rural areas how to implement multijurisdictional economic development plans and projects.

The program will include workshops, team mentoring, educational webinars, community case studies, and interactive learning opportunities. The goals of this effort are to: 1) inspire rural county and regional leaders to think creatively and regionally about new solutions to local challenges; 2) facilitate collaboration and partnership among neighboring counties within a region; and 3) empower counties to develop and implement economic and community strategies with emphasis on economic diversification; supporting a rural workforce; technological innovation and e-connectivity; regional asset-based development; and local quality of life.

Contact: Cheryl Burnett, Email: CBurnett@naco.org

Website: <http://www.naco.org>



Rural Community Assistance Partnership

The Rural Community Assistance Partnership (www.rcap.org) will deliver technical assistance utilizing the WealthWorks model (www.wealthworks.org) focused on helping rural regions and communities identify existing wealth or assets to build upon, recognize market opportunities and connect local assets to real market demand. WealthWorks allows local leaders to focus on what they have—instead of what they lack—to generate multiple forms of wealth that benefit residents today and for generations to come while rooting value in local people, places, and businesses.

WealthWorks offers a systematic approach that engages a wide range of community partners in turning enterprising opportunities into results. This model can complement or incorporate traditional economic development methods, but intentionally focuses on creating more value that becomes rooted locally. WealthWorks' value chain approach is a self-sustaining, distinctive economic development model. Value chains develop from local assets, holistically building relationships and filling gaps to link local small businesses and entrepreneurs with identified market demand.

Six hubs across the country will provide this value-chain development assistance:

- Community Roots (serving Connecticut, Maine, New Hampshire, New York, Rhode Island, and Vermont)
- Central Appalachian Network (serving Kentucky, North Carolina, Ohio, Tennessee, Virginia, West Virginia)
- Communities Unlimited (serving Arkansas, Louisiana, Mississippi, Oklahoma, Tennessee, and Texas)
- Region Five Development Commission (serving Minnesota)
- Rural Community Assistance Corporation (serving Alaska, Arizona, California, Colorado, Hawaii, Idaho, Montana, Nevada, New Mexico, Oregon, Utah, Washington, and Wyoming)
- Rural Development Initiatives (serving Idaho, Oregon, and Washington)

Additional support in the Midwest will come online later in the REDI initiative through the Midwest Assistance Program.

Contact: Ashley Zuelke, Email: AZuelke@rcap.org

Website: www.rcap.org / www.wealthworks.org



McClure Engineering Company

McClure provides a full spectrum of engineering, planning, surveying, design, construction administration, placemaking, and funding assistance throughout the nation. The firm continues to expand its services and impact by working alongside communities to develop a people-centered blueprint for sustainable economic and community development.

For the Rural Economic Development Initiative (REDI), McClure is partnering with CO.STARTERS, a Chattanooga, Tennessee-based firm assisting communities to build entrepreneurial ecosystems through the introduction and use of proven resources and tools. The team will engage with four rural communities across the country. These communities will be guided through a planning process to identify and leverage existing assets to spur economic and community development, strengthen workforce pipelines, and build entrepreneurial ecosystems to capitalize on technological innovation. The outcome will be an economic development plan to improve the quality of life for both current and future residents. Community Visioning/Asset Mapping, Capacity Assessment, Action Plan Development, Local Leader and Small Business Capacity Building, and Implementation Technical Assistance will be undertaken to accomplish the goals of the project.

Contact: Alex Holland, Email: aholland@mecresults.com

Website: <http://mcclureplacemaking.com/>



Purdue University and the University of Kentucky

Purdue University and the University of Kentucky have joined forces to coordinate and implement the REDI Initiative in the North Central and Southern regions of the United States. Combined, the two regions represent 25 of the nation's 50 states and encompass 78 percent of the nation's nonmetropolitan counties (i.e., 1,544 counties). The Purdue team is part of the Purdue Center for Regional Development (PCRD) and the Purdue Extension Community Development Program, while the Kentucky team is comprised of individuals connected to the Community and Economic Development Initiative of Kentucky (CEDIK). The mission of the PCRD is to pioneer new ideas and strategies that contribute to regional collaboration, innovation and prosperity while the overall purpose of CEDIK is to catalyze positive change to build engaged communities and vibrant economies.

Partnering with national and state colleagues from USDA Rural Development, the Purdue/Kentucky team will work with self-defined regions to realize the following key objectives: (1) Build a strong, inclusive regional team; (2) Study data on the five critical areas associated with the national "Agriculture and Rural Prosperity Task Force Report" and garner public input on these five key topics; (3) Equip the regional REDI team with the tools and strategies needed to build a sound strategic plan; (4) Guide the team in the producing a multi-year plan; (5) Assist the regional team in hosting focus group meetings to gain support for the plan by residents, agencies and organizations in the region; (6) Work with federal, state local and philanthropic organizations to explore funding sources to help put the regional plan into action; and (7) Track short, intermediate and long-term outcomes of the REDI program in the region.

Contact: Lionel J. Beaulieu, Email: ljb@purdue.edu

Website: <https://www.pcrd.purdue.edu/> or <https://cedik.ca.uky.edu/>